

FOR LEASE

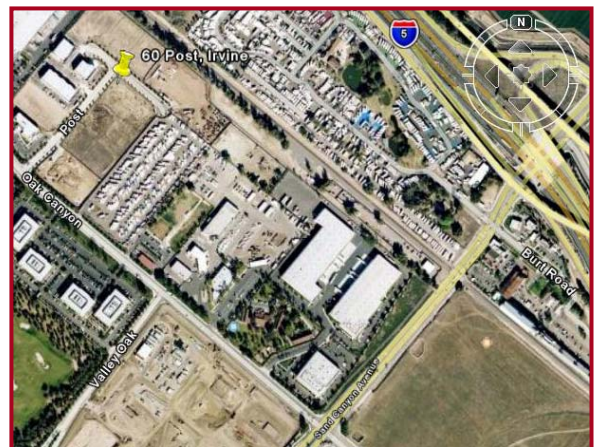
**9,360-10,449 Sq. Ft.
Industrial Space**



60 Post, Ste. A, Irvine, CA

Features Include:

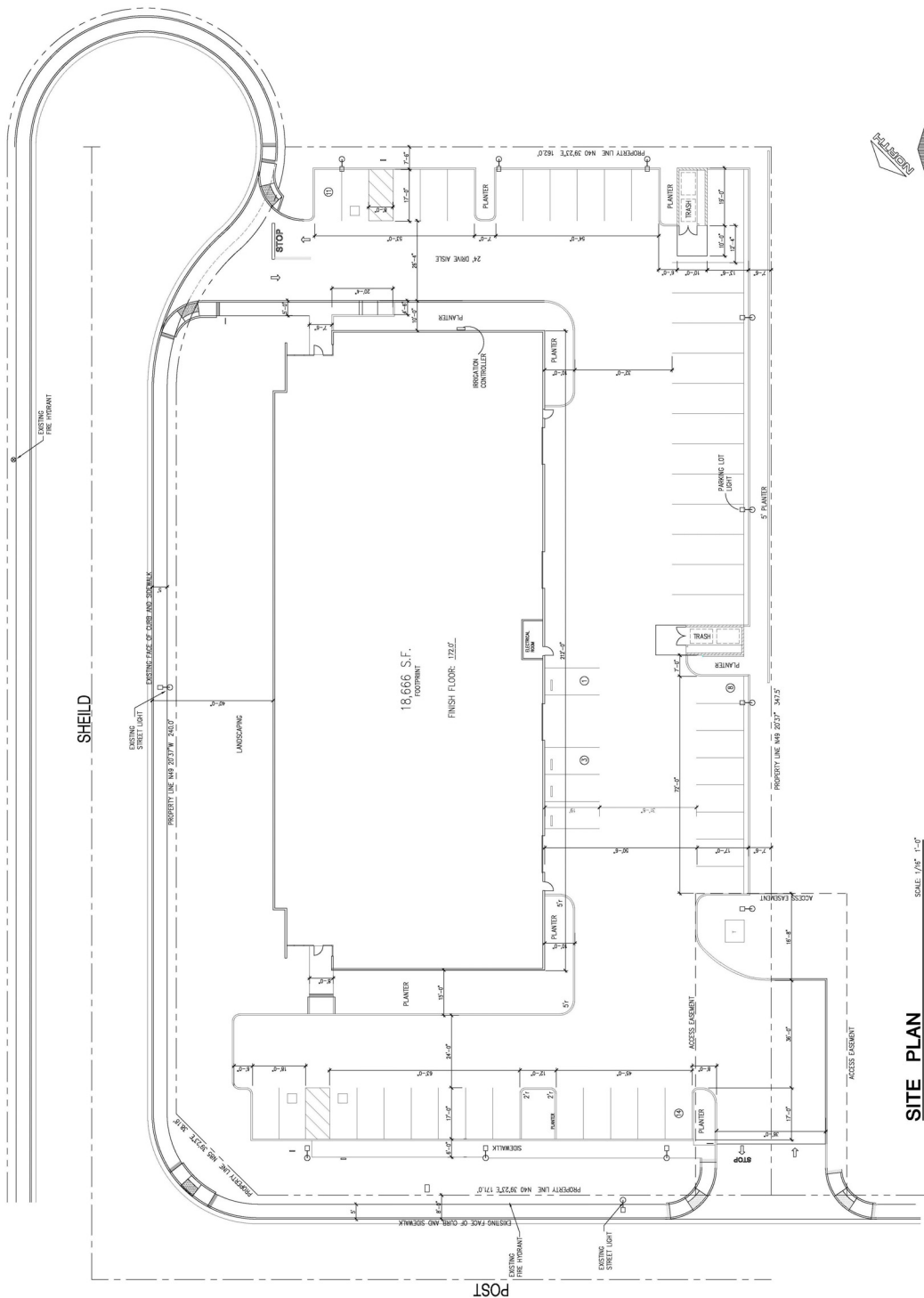
- **845 Sq. Ft. Existing Office Space**
- **Fire Sprinklers**
- **21' Warehouse Clearance**
- **200 Amps – 120/208 volt (Up to 600 amps)**
- **Office Expandable to +/- 3,400 Sq. Ft.**
- **Two 12'x12' Ground Level Loading Doors**
- **2:1 Parking Ratio**



For Further Information Please Contact:
BRIAN DALTON or JIM POTTER
(714)777-1468 Fax (714)777-5779



**1241 N. Lakeview Avenue, Ste. F
Anaheim, CA 92807**



SITE PLAN
60 POST
IRVINE, CA

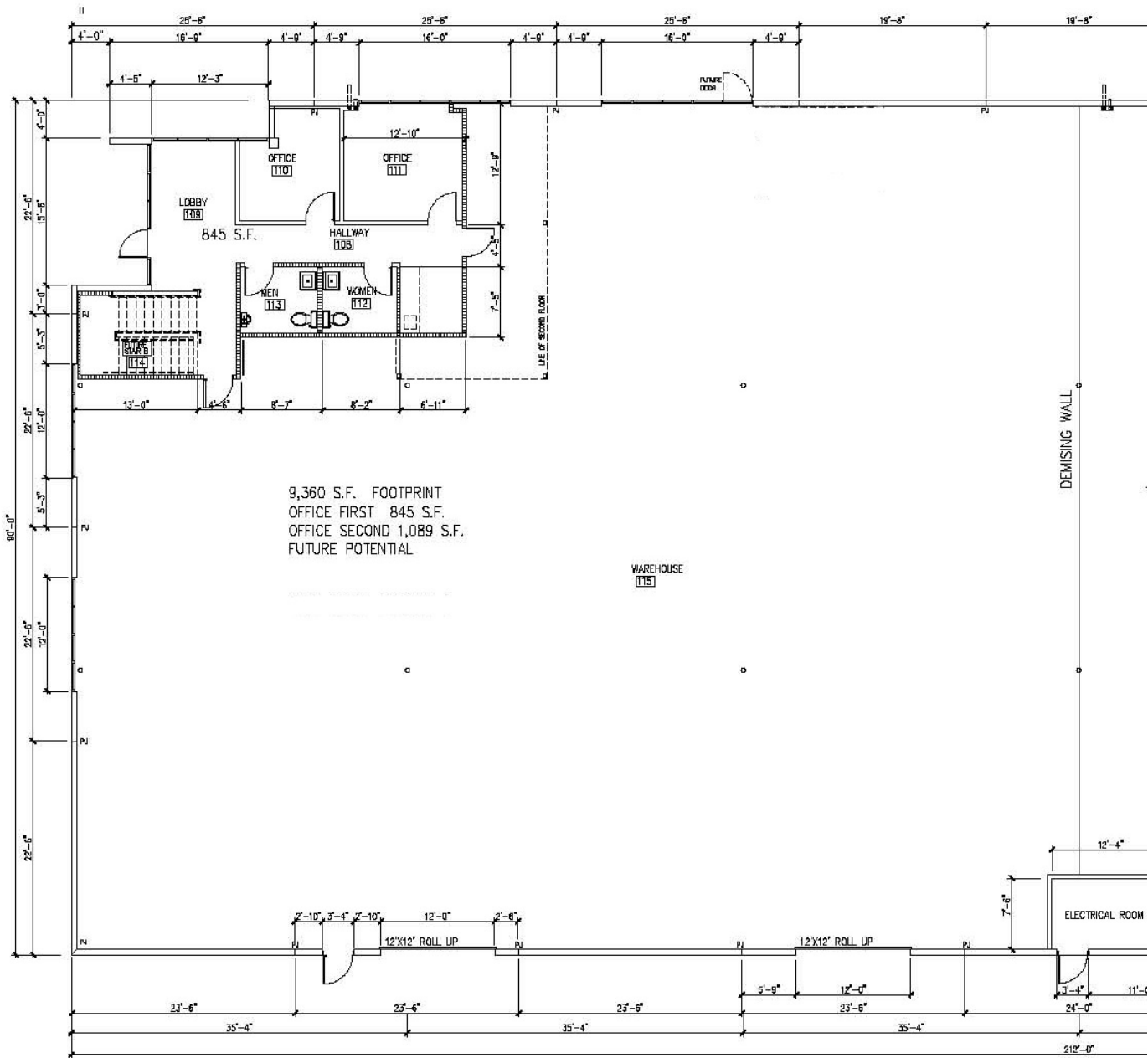
SCALE: 1/4" = 1'-0"



1241 N. Lakeview Avenue, Ste. F
Anaheim, CA 92807

For Further Information Please Contact:
BRIAN DALTON or JIM POTTER
(714)777-1468 Fax (714)777-5779

Information contained herein has been obtained by parties we deem reliable, however, we do not guarantee its accuracy and assume no liability. Do not rely on any of the information contained herein without verifying it yourself.



FLOOR PLAN



1241 N. Lakeview Avenue, Ste. F
Anaheim, CA 92807

For Further Information Please Contact:
BRIAN DALTON or JIM POTTER
(714)777-1468 Fax (714)777-5779