

FOR SALE

6,500 Sq. Ft. Freestanding Office Building



**4226 E. La Palma Avenue
Anaheim, CA**

Building Features Include:

- 100% Office Space With Lots of Windows
- Private Offices, Conference Room, Open Office
- Lunch Room, Storage Room, 4 Restrooms
- 25 Parking Stalls (3.85:1 Parking Ratio)
- Fenced Parking/Yard Approved By Association
- One 12' x 12' Ground Level Loading Door
- 400 Amp 120/208 volt 3-Phase Power (Verify)
- Major Street Frontage
- Newly Slurry Sealed Asphalt
- Part of High Image "Park La Palma" Project
- Easy Access to 91, 55, 57 & 241 Freeways



1241 N. Lakeview Avenue, Ste. F
Anaheim, CA 92807
DRE #01033833

For Further Information Please Contact:

BRIAN DALTON | JIM POTTER

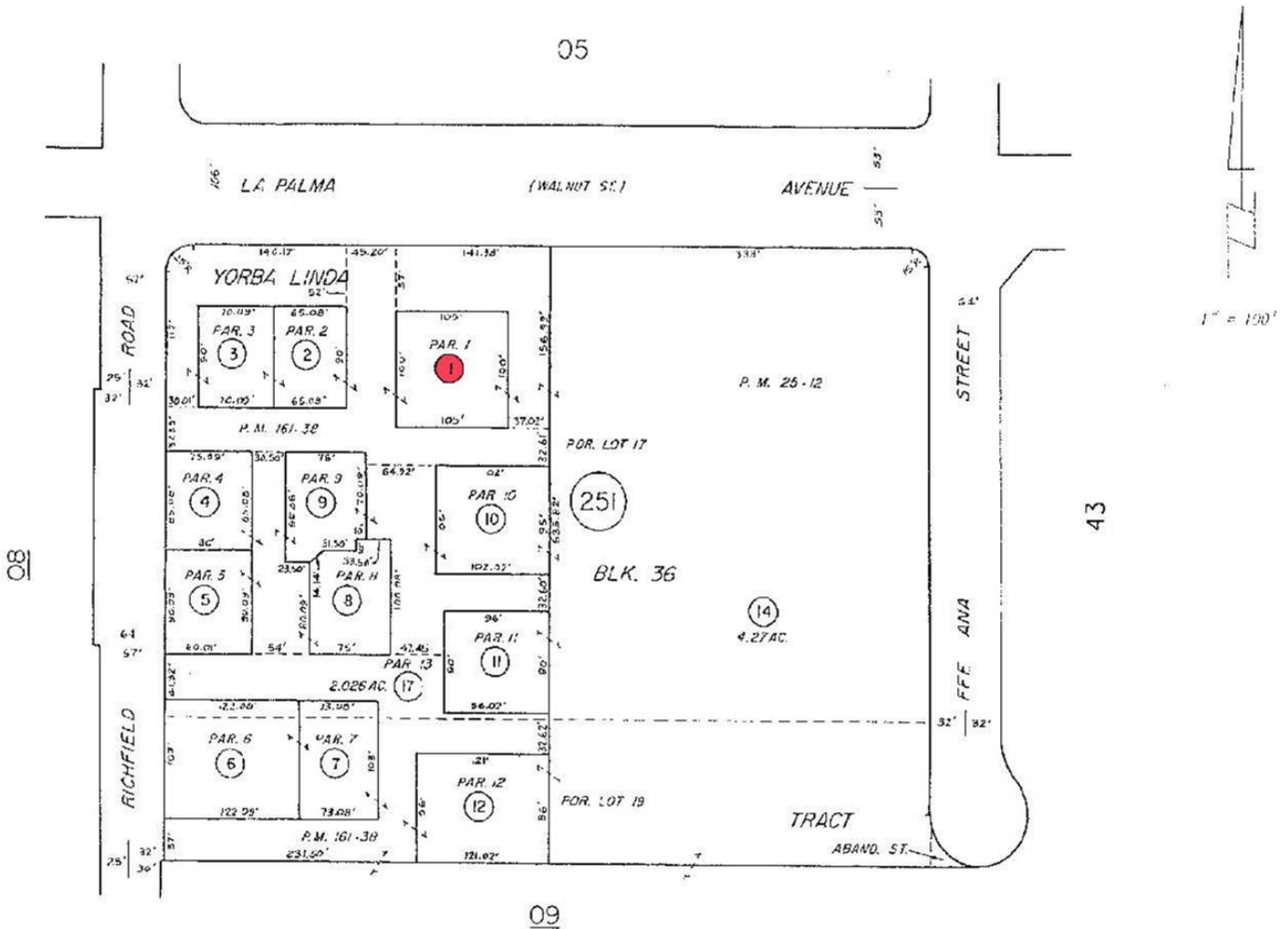
DRE #01181724

DRE #00549334

(714)777-1468 Fax (714)777-5779

4226 E. La Palma Ave., Anaheim PARCEL MAP

346-25



YORBA LINDA TRACT
PARCEL MAP

M. M. 5-17, 18
P. M. 161-38

NOTE - ASSESSOR'S BLOCK &
PARCEL NUMBERS
SHOWN IN CIRCLES

ASSESSOR'S MAP
BOOK 346 PAGE 25
COUNTY OF ORANGE



1241 N. Lakeview Avenue, Ste. F
Anaheim, CA 92807
DRE #01033833

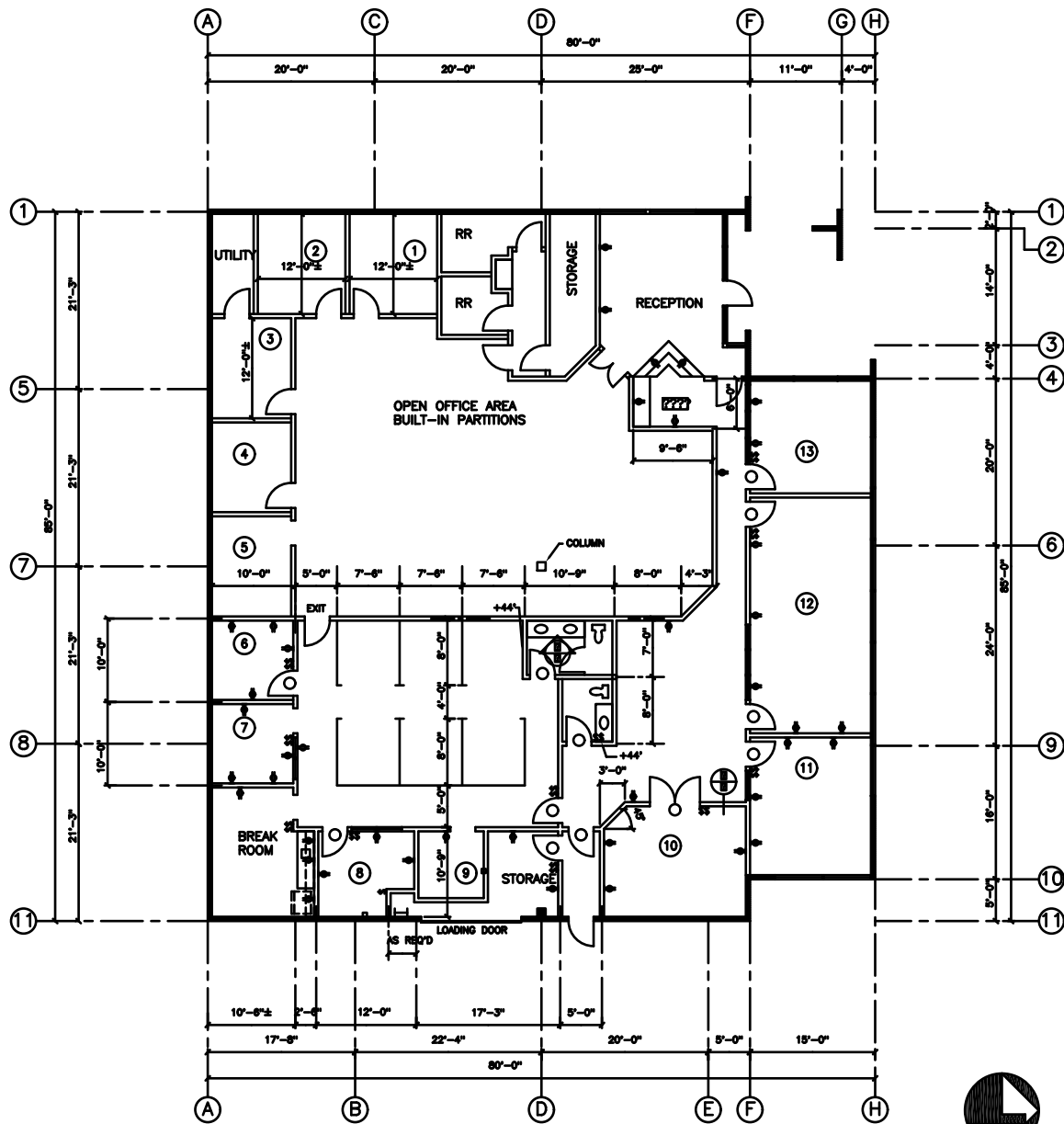
For Further Information Please Contact:

BRIAN DALTON | JIM POTTER

DRE #01181724

DRE #00549334

(714)777-1468 Fax (714)777-5779



PR Properties, Inc.
 1241 N. Lakeview Ave., Ste. F
 Anaheim, CA 92807
 (714)777-1468 | Fax
 (714)777-5779
 www.prpropertiesinc.com

The information contained herein was obtained from sources we deem reliable, but we do not guarantee its accuracy and assume no liability. You must verify all information for yourself.

January 2012

4226 E. LA PALMA AVE., ANAHEIM, CA 92807 | FLOOR PLAN