

F O R L E A S E

**3,300 Sq. Ft.
100% OFFICE SPACE**



**1261 N. Lakeview Ave., Suite A, Anaheim, CA
Etchandy Commerce Center**

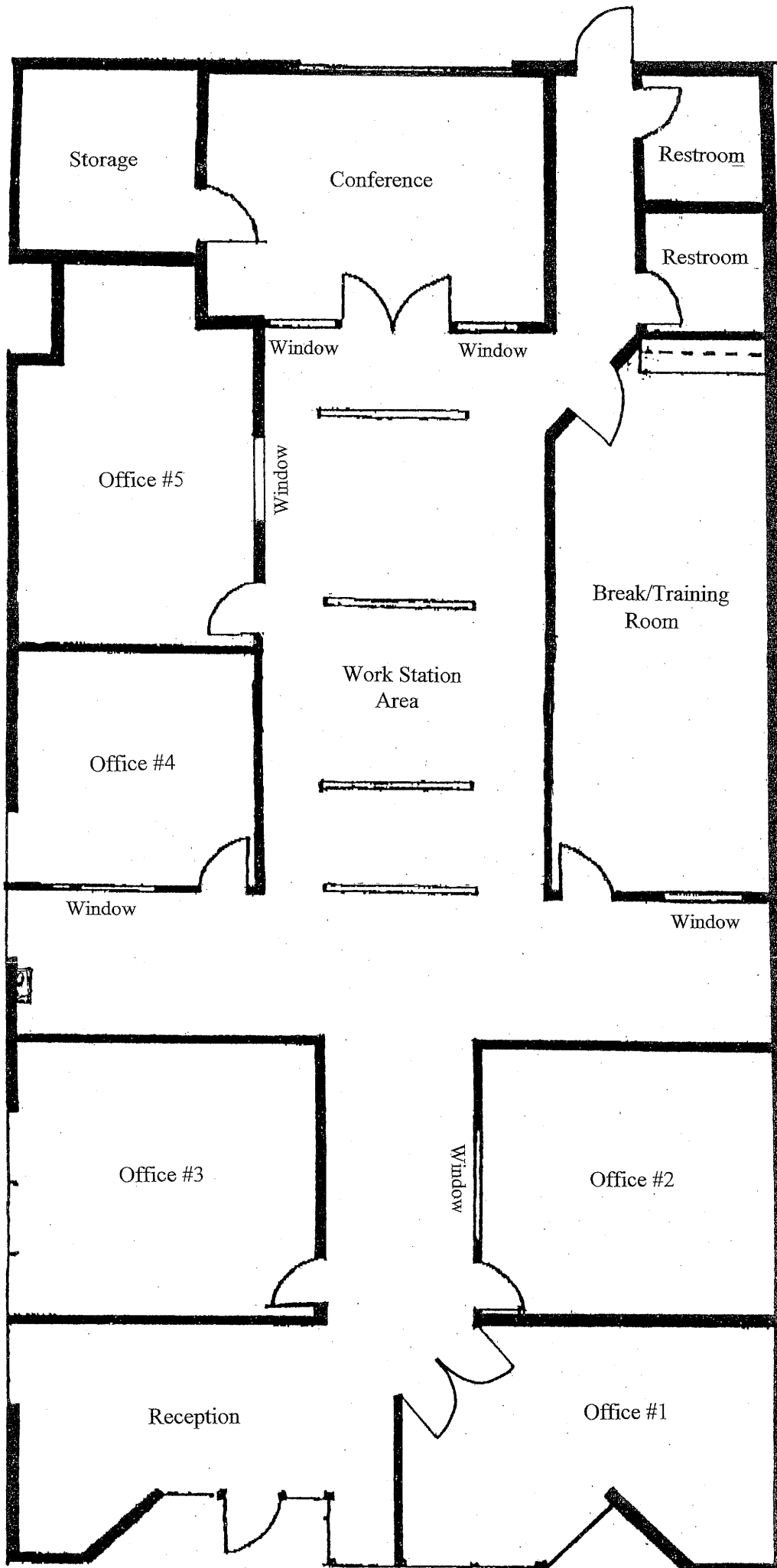
Features Include:

- 100% HVAC Office Space
- Reception, 5 Private Offices (3 w/Windows)
- Conference, Open Office Area
- Break/Training Room, Storage Room
- Partial T-Bar/Partial Full-Height Ceiling
- High Image Offices w/Interior Glass
- End Unit w/Building Signage On 2 Sides
- Major Street Frontage
- Fire Sprinklers
- High Image Project
- Quick Access to 91/55/241 Freeways



1241 N. Lakeview Avenue, Ste. F
Anaheim, CA 92807

For Further Information Please Contact:
JIM POTTER or BRIAN DALTON
(714)777-1468 Fax (714)777-5779
www.prpropertiesinc.com



1261 N. Lakeview Ave., Ste. A
 Anaheim, CA
 3,300 Sq. Ft. Office



For Further Information Please Contact:
 BRIAN DALTON or JIM POTTER
 (714)777-1468 Fax (714)777-5779

PR Properties, Inc. - 1241 N. Lakeview Avenue, Ste. F, Anaheim, CA 92807
 California DRE License Numbers: 01033833 / 00549334 / 01181724