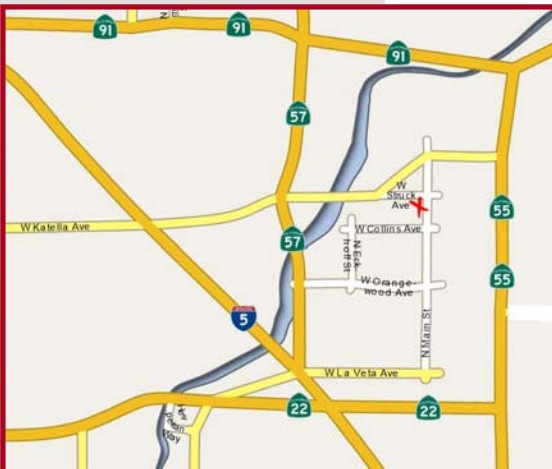


FOR SALE

21,200 Sq. Ft. Multi-Tenant Building



1030 N. Main Street, Orange, CA



Features Include:

- 7-Unit Multi-Tenant Building
- Zoned M2 / CR / Urban Mixed Use
- Industrial, Office & Retail Uses
- 7,807 Sq. Ft. Leased
- 7-12' x 12' Ground Level Loading Doors
- 1,100 Amps (7-100A 1P, 1-200A 1P, 1-200A 3P)
- 16.5' – 19' Warehouse Clearance
- 3:1 Parking (67 Stalls)
- 550 Sq. Ft. Bonus Mezzanine
- Natural Gas Available
- New Paint Underway
- Just One Mile From Honda Center & Angel Stadium
- Easy Access to 57, 22, 5 & 91 Freeways



1241 N. Lakeview Avenue, Ste. F
Anaheim, CA 92807
DRE #01033833

For Further Information Please Contact:

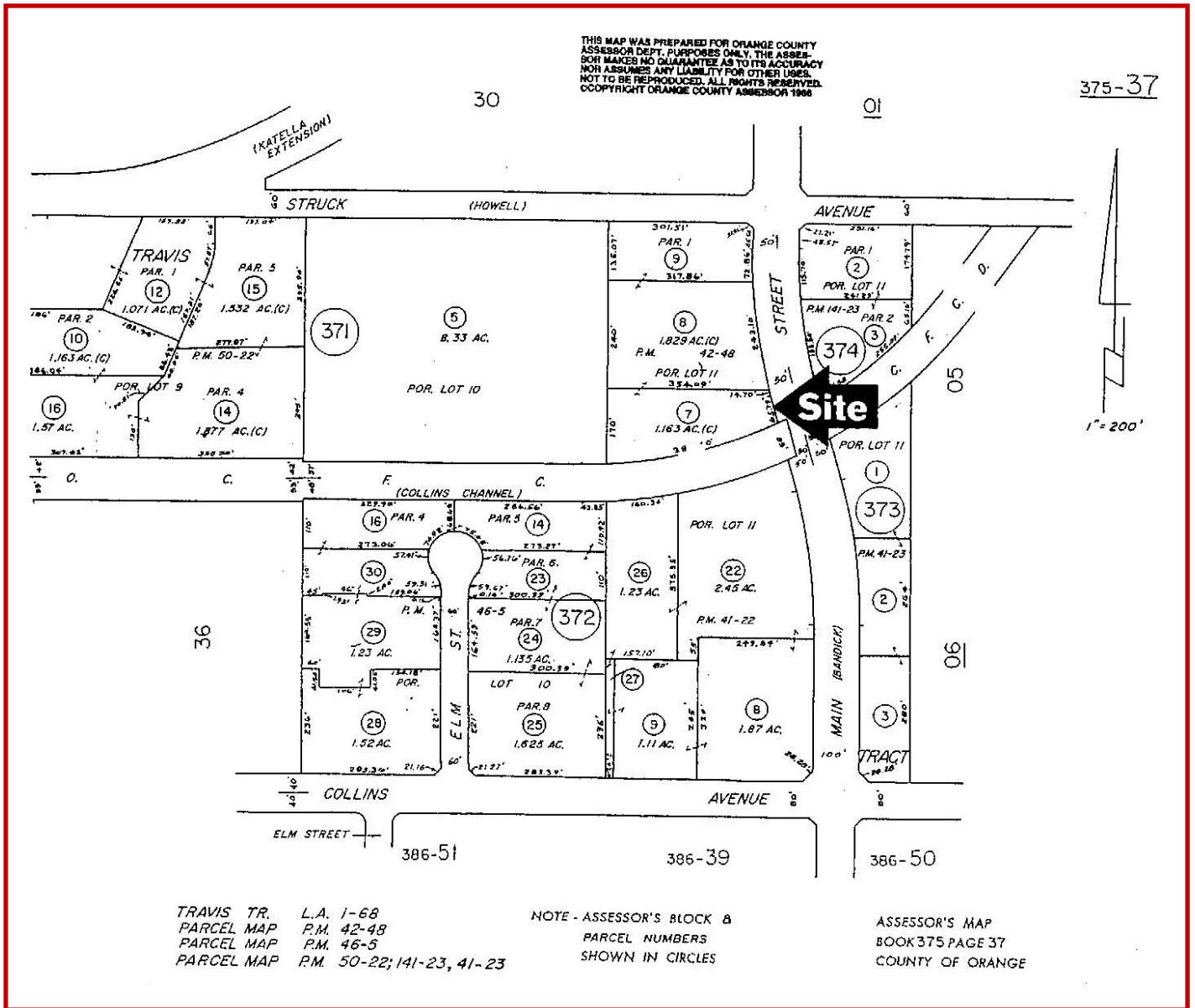
JIM POTTER | BRIAN DALTON

DRE #00549334

DRE #01181724

(714)777-1468 Fax (714)777-5779

1030 N. Main Street, Orange, CA PARCEL MAP



TRAVIS TR. L.A. 1-68
 PARCEL MAP P.M. 42-48
 PARCEL MAP P.M. 46-5
 PARCEL MAP P.M. 50-22; 141-23, 41-23

NOTE - ASSESSOR'S BLOCK &
 PARCEL NUMBERS
 SHOWN IN CIRCLES

ASSESSOR'S MAP
 BOOK 375 PAGE 37
 COUNTY OF ORANGE



1241 N. Lakeview Avenue, Ste. F
 Anaheim, CA 92807
 DRE #01033833

For Further Information Please Contact:

JIM POTTER | BRIAN DALTON

DRE #00549334

DRE #01181724

(714)777-1468 Fax (714)777-5779