

FOR SALE

5,229 Sq. Ft. Office/Warehouse

2-Tenant Building Fenced Yard



4210-4212 E. La Palma Ave., Anaheim, CA 92807

Features Include:

- 2,619 Sq. Ft. Available For Buyer to Occupy or Lease Out
- 2,610 Sq. Ft. Leased Through September 30, 2026
- Fenced Yard/Parking w/Electric Gate
- +/- 16' Warehouse Clearance
- 400 Amps (2 - 200 Amp Panels - 120/208 Volt - 3 Phase) - *Must Verify*
- Two 12'x14' Ground Level Loading Doors
- Bonus Mezzanine Storage Space
- High Image Office Space w/Window Offices & Several Interior Glass Office Walls
- East Anaheim Location w/Quick Access to 91/55/57/241 Freeways
- Located Within "Park La Palma" Complex at SEC of La Palma Ave./Richfield Rd.



**1241 N. Lakeview Avenue, Ste. F
Anaheim, CA 92807**
DRE #01033833

For Further Information Please Contact:

BRIAN DALTON

bdalton@prpropertiesinc.com

DRE #01181724

(714)777-1468

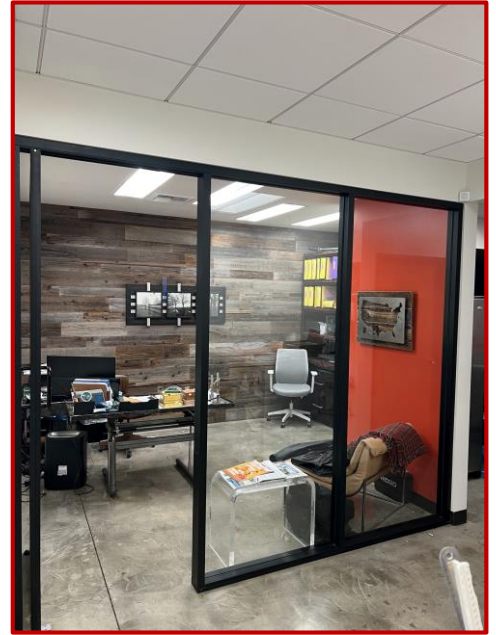
JIM POTTER

jpotter@prpropertiesinc.com

DRE #00549334

Fax (714)777-5779

**PICTURES: 4212 E. La Palma Ave., Anaheim
2,619 Square Feet**



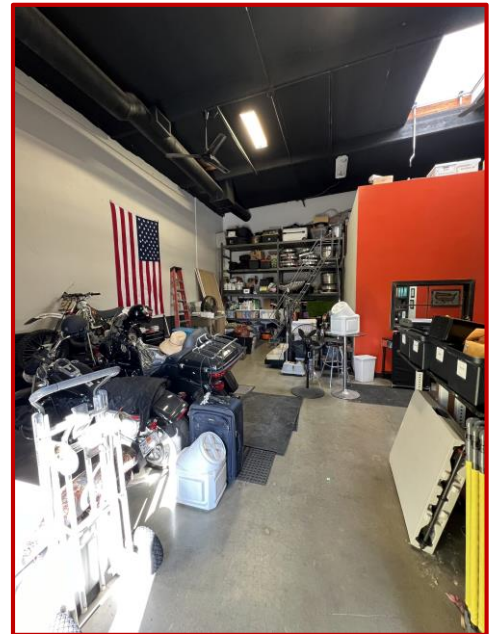
**1241 N. Lakeview Avenue, Ste. F
Anaheim, CA 92807**
DRE #01033833

For Further Information Please Contact:

BRIAN DALTON
bdalton@prpropertiesinc.com
DRE #01181724
(714)777-1468

JIM POTTER
jpotter@prpropertiesinc.com
DRE #00549334
Fax (714)777-5779

**PICTURES: 4212 E. La Palma Ave., Anaheim
2,619 Square Feet**



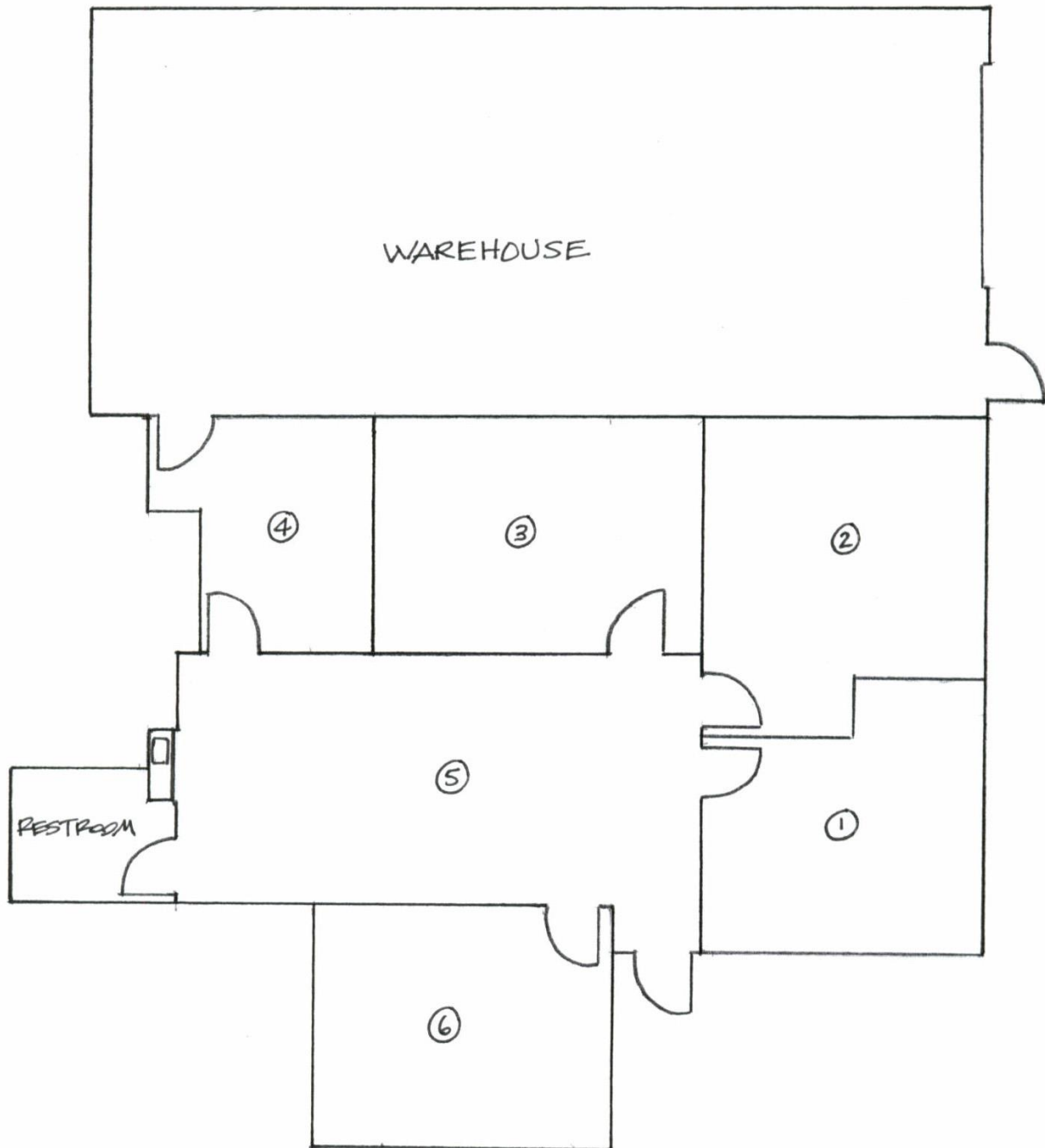
**1241 N. Lakeview Avenue, Ste. F
Anaheim, CA 92807**
DRE #01033833

For Further Information Please Contact:

BRIAN DALTON
bdalton@prpropertiesinc.com
DRE #01181724
(714)777-1468

JIM POTTER
jpotter@prpropertiesinc.com
DRE #00549334
Fax (714)777-5779

**FLOOR PLAN: 4210 E. La Palma Ave., Anaheim (LEASED)
2,610 Square Feet**



**1241 N. Lakeview Avenue, Ste. F
Anaheim, CA 92807**
DRE #01033833

For Further Information Please Contact:

BRIAN DALTON
bdalton@prpropertiesinc.com
DRE #01181724
(714)777-1468

JIM POTTER
jpotter@prpropertiesinc.com
DRE #00549334
Fax (714)777-5779